



PHOTO REVIEW



This column presents in pictorial form many of the more unusual radios, speakers, tubes, advertising, and other old radio-related items from our readers' collections. The photos are meant to help increase awareness of what's available in the radio collecting hobby. Send in any size photos from your collection. Photos must be sharp in detail, contain a single item, and preferably have a light-colored background. A short, descriptive paragraph **MUST** be included with each photo. Please note that receipt of photos is not acknowledged, publishing is not guaranteed, and photos are not returned.



GENERAL ELECTRIC MODEL U-50 – Not much is known about this radio, except that it is a DC or farm radio, manufactured in 1936. Can any subscribers offer more information? (Clark Trissell – Lincoln, NE)



MAJESTIC MODEL 311 – Built in 1932 by the Grigsby-Grunow Co., this tombstone table radio uses the following seven tubes: (1) Type 80 rectifier, (1) Type 47, (1) Type 55, (1) Type 56, and (3) Type 58. (Clark Trissell – Lincoln, NE)

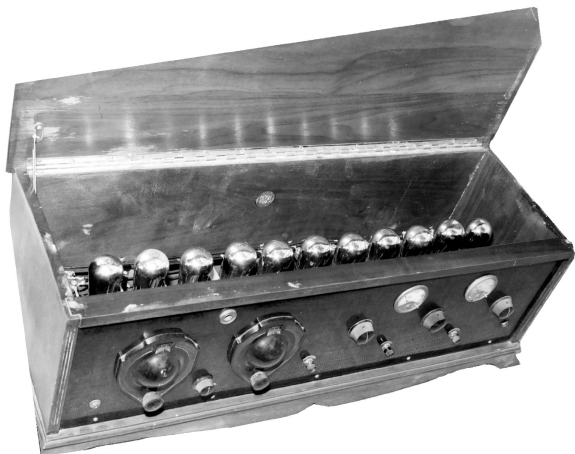


CROSLY MUSICONE – Manufactured by the Crosley Radio Corporation of Cincinnati, Ohio, in 1925, this paper cone speaker is the "Regular Musicone." It is 12" in diameter and sold for \$12.50. There were also other Musicone models — the "Super" and the "Ultra" models. (Clark Trissell – Lincoln, NB)



FREED-EISEMANN MODEL 30 – The Freed-Eisemann Corporation of New York manufactured this 6-tube battery set in 1926. It operates with the Neutrodyne circuit using two tuning dials. (Clark Trissell – Lincoln, NB)

PHOTO REVIEW



MELO-HEALD ELEVEN – Made by the Robertson-Davis Co. in Chicago, this mid-1920s, 11-tube, battery superhet uses ten Type 201A tubes and one Type 112A. All eleven coils are either Melocouplers or Meloformers. A Kansas City distributor sold the parts kit for \$100.08, but would include all tubes, the cabinet, A, B, C batteries, a loop antenna and a speaker for a total price of \$153. (*Ray Chase – Plainfield, NJ*)



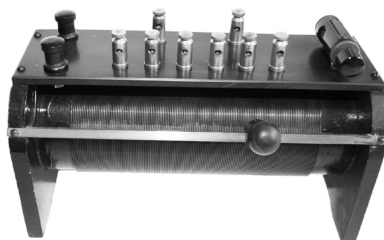
TRAV-LER MODEL 66 – This Bakelite, 7-tube table radio was manufactured by Trav-Ler Karenola Radio and Television Corp. of Chicago, Illinois. In 1951, it sold for \$35. (*Clark Trissell – Lincoln, NE*)



CROSLY MODEL 51-S – This 2-tube regenerative receiver with binding posts inside is the standard Model 51 in a deluxe cabinet. It was manufactured by the Crosley Radio Corporation of Cincinnati in 1925. (*Clark Trissell – Lincoln, NE*)



CROSLY MODEL 11-115U – This maroon, plastic, table radio was manufactured in 1951 by the Crosley Radio Manufacturing Company of Cincinnati, Ohio. Its 5-tube chassis tuned the broadcast band only. The whole 11-series of "Serenader" table radios came in assorted colors. (*Dave Crocker – Mashpee, MA*)



R. GÄRDTNER & COMPANY "PHÄNOMA" – This is a very rare slide tuning crystal set from 1924 made by a Vienna manufacturer. Its well-known, plug-in crystal detector was made by Telux. (*Erwin Macho – Vienna, Austria*)
